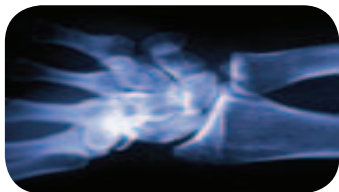


you can  
**Canon**



MULTIMEDIA PROJECTOR RANGE

**XEED**

BRIGHTER THINKING



# Make an Impact.

For professionals who understand the importance of visual impact, a XEED projector is the natural choice. Canon's combination of award-winning optics and LCOS technology delivers outstanding images - and with most models projecting at SXGA+ resolution or higher, presentations can be supercharged with High Definition content.



## IDEAL FOR:

- CONFERENCE VENUES
- EXHIBITION CENTRES
- BOARDROOMS AND MEETING FACILITIES
- PHOTOGRAPHY PROFESSIONALS
- GRAPHIC DESIGN INDUSTRY
- MEDICAL IMAGING
- SIMULATION
- PUBLIC DISPLAYS
- ENTERTAINMENT, NIGHTLIFE AND THE EVENTS INDUSTRY
- THEATRE AND SPECIAL EFFECTS



## XEED WUX10

# Designed for Versatility.

## XEED SX7

The high resolution and precision optics of the XEED range allow for a broad range of applications - including technical or medical uses where ultra-fine detail is essential. For designers, printers and other graphics professionals, selected models support the Adobe RGB colour space.

## XEED SX6

## XEED SX80

# Quiet and Compact.

## XEED SX60

Thanks to the light path efficiency of AISYS, XEED projectors deliver heavyweight performance from a compact, lightweight form. Complemented by whisper-quiet operation with minimal fan noise, XEED helps keep the audience focused on your presentation.

## XEED X700

# The XEED Formula.

## THE LCOS ADVANTAGE

To overcome unsightly 'lattice' and 'rainbow' effects, the XEED range uses superior LCOS panels. These combine the best of LCD and DLP projection technologies, to produce smooth, flawless images with faithful colour reproduction and exceptionally fast response, making them ideal for both still and moving images.



LCD technology



XEED LCOS technology

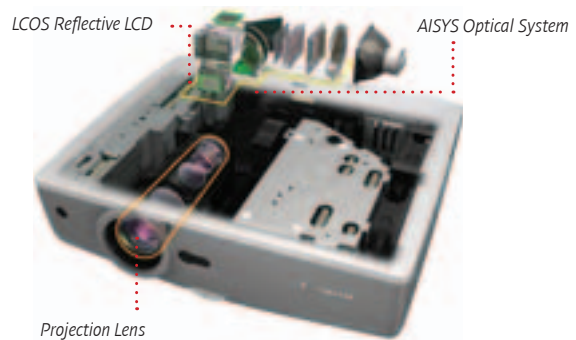
# Total Optical Excellence.

## BRILLIANT AISYS IMAGING

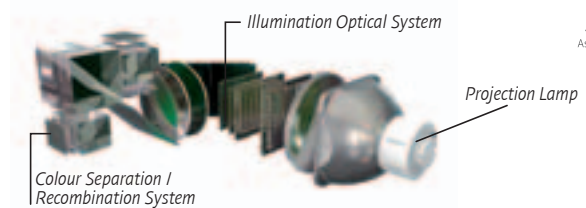
Canon AISYS (Aspectual Illumination System) features a compact optical array, capable of highly efficient light control. This works with LCOS technology to deliver a previously impossible combination: simultaneous high brightness and high contrast from a compact projector.

With brightness levels of up to 4000 lumens and contrast ratios of up to 1000:1 (2000:1 for SX60 in Home Cinema Mode), every XEED delivers vivid images with striking colours and deep, pure blacks.

## Inside the XEED Projector



## AISYS (Aspectual Illumination System)



## GENUINE CANON OPTICS

Every XEED projector incorporates a wide-angle Canon projection lens with power-driven zoom. The XEED WUX10 and XEED SX80 feature a 1.5x zoom lens, which virtually eliminates image distortion by using a special double-sided aspherical element.

Also included is 10:0 image offset, which matches the lower edge of the projected image to the optical axis of the lens - making installation straightforward, and reducing the need for Keystone Correction. Other XEED models offer an increased range of throw distances, via a 1.7x zoom lens.

## Projection Lens



Dual-sided aspherical lens

# Future Proof.

From television to computing, High Definition is changing the face of visual content. That's why most XEED projectors offer native SXGA+ resolution (1400 x 1050 pixels)\*. These models are HD ready and give top quality results with HD sources - ensuring that you won't be left behind in the future.

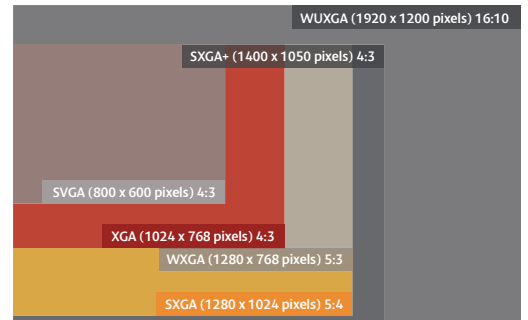
*\*All models operate at SXGA+ resolution except XEED X700 (XGA) and XEED WUX10 (WUXGA)*

## Comparative Resolution Chart

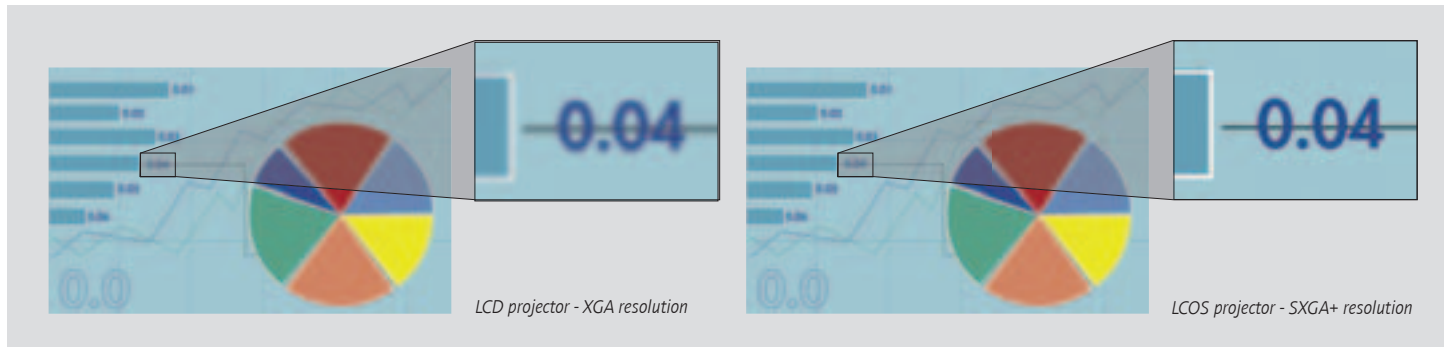
Projector Resolution	Professional Image Quality	PC Compatibility						Video Compatibility	
		XGA 1024 x 768	WXGA 1280 x 800	SXGA 1280 x 1024	WXGA+ 1440 x 900	WSXGA+ 1680 x 1050	WUXGA 1920 x 1200	HD Ready (720p)	Full HD (1080p)
XGA	1024 x 768	x	✓	x	x	x	x	x	x
720p	1280 x 720	x	x	x	x	x	x	✓	x
WXGA	1280 x 768	x	✓	✓	x	x	x	✓	x
<b>SXGA+</b>	<b>1400 x 1050</b>	<b>✓</b>	<b>✓</b>	<b>✓</b>	<b>✓</b>	<b>x</b>	<b>x</b>	<b>✓</b>	<b>x</b>
1080p	1920 x 1080	✓ ✓	✓	✓	✓	✓	x	✓	✓
<b>WUXGA</b>	<b>1920 x 1200</b>	<b>✓ ✓</b>	<b>✓</b>	<b>✓</b>	<b>✓</b>	<b>✓</b>	<b>✓</b>	<b>✓</b>	<b>✓</b>

### HIGH RESOLUTION, HIGH QUALITY

Because quality presentations call for quality detail, XEED reproduces high resolution content with extra precision. Fine lines are rendered with pin-sharp accuracy, text remains legible at smaller font sizes, and multiple windows can be displayed without loss of image clarity.



## Resolutions Compared



### COMPATIBLE WITH MORE

Whatever the source, the XEED high resolution range of projectors ensures exceptional image quality.

**PC** - As native resolution on computer monitors continues to expand - with many new desktops and laptops offering SXGA+ resolution or above - the XEED range ensures that the audience sees exactly what's on your screen.

**VIDEO** - Display High Definition video as it should be seen. SXGA+ resolution allows most XEED models to reproduce 720p images without compression. And for stunning Full HD (1080p) image display, the XEED WUX10 features native WUXGA resolution (1920 x 1200 pixels).

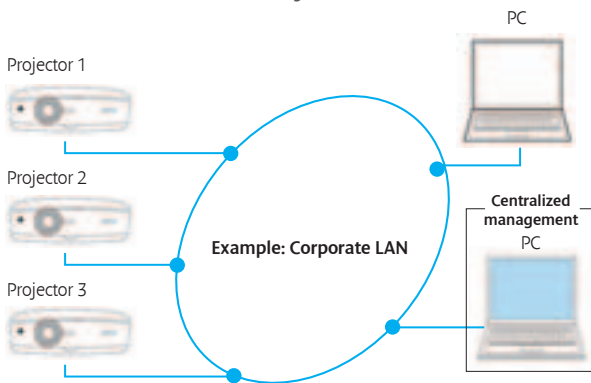
# Get Connected.

Connect instantly to all standard image sources, via a comprehensive range of analogue and digital connectivity options – plus dedicated audio and control ports. Selected XEED models expand your presentation options with network connectivity, digital links to High Definition sources, and direct connections to USB flash drives or PictBridge-enabled digital cameras.

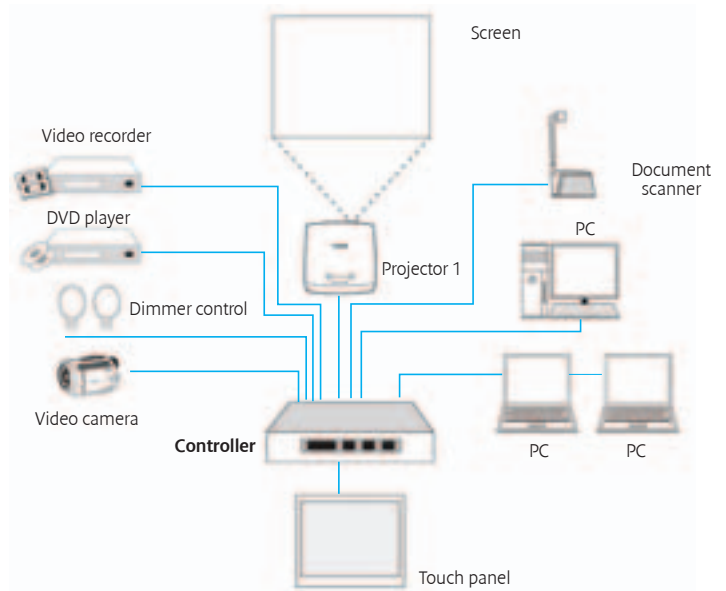
## NETWORK READY

For easy, centralised control and monitoring, the XEED SX80 and XEED WUX10 feature a built-in RJ45 port - allowing direct connection to an Ethernet network. This is available as an optional accessory on all other XEED models.

### Network Connectivity



### Integration Options



## LOSSLESS DETAIL

Both the XEED SX80 and XEED WUX10 include DVI and HDMI™ terminals, giving exacting image reproduction from High Definition sources like personal computers and set-top boxes.

## NO PC REQUIRED

With the new “PC-Free Presentation” feature found on the XEED SX80, you can project images straight from USB flash drives or PictBridge-enabled digital cameras - perfect for spontaneous presentations, or occasions when carrying a computer is impractical.

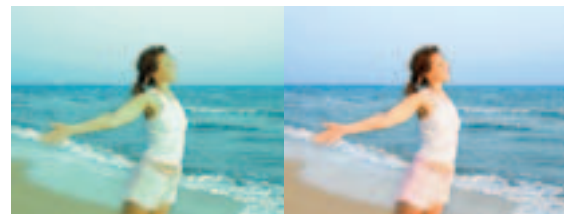
# Automatic Intelligence.

**Auto Input Selection** detects the active input terminal and configures itself accordingly.

**Auto Screen Colour Correction** automatically compensates for the colour of the projection surface to deliver perfect images with natural looking colours.

**Auto Focus** automatically sets the projector focus to the optimum position, taking into account throw distance and projection angle.

**Auto Vertical Keystone Correction** compensates for projector tilt up to +/- 20 degrees, to deliver perfectly square images with parallel edges.



Screen Colour Correction Off

Screen Colour Correction On



Without Auto Focus and Keystone Correction



Focus and Keystone are adjusted automatically, in a matter of seconds

## WUXGA and Full HD - the Best of Both Worlds.

With industry-leading WUXGA resolution (1920 x 1200), the flagship XEED WUX10 redefines the capabilities of a portable projector. Projecting widescreen computer images and Full HD Video (1080p) at a powerful 3200 lumens, it is ideal for business and specialist AV use.



### Target Markets

**Business & Education:** Boardrooms; Lecture Theatres

**Specialist Applications:** Publishing, Printing & Pro Photo Applications; CAD & CAE; Simulation & Virtual Reality; Sports & Media Bars



- Native WUXGA resolution (1920 x 1200 pixels) also handles Full HD (1080p)
- Canon AISYS Optical System yields bright 3200 lumens and 1000:1 contrast - for clear images and vivid colours, even in adverse lighting conditions
- Canon 1.5x powered zoom lens with 10:0 lens offset for flexible placement
- Fully automatic setup: Auto Focus, Keystone Correction, Screen Colour Correction and Input Selection
- DVI port and HDMI™ Connector for perfect reproduction of digital sources
- Quiet operation: runs at just 31dBA in Quiet Mode, to minimise audience distraction
- RJ-45 terminal for control and monitoring via a network
- Compact, lightweight design - weighs just 4.9kg



### CONNECTIVITY

#### VIDEO INPUT AND OUTPUT

- 1. DVI-I 29-pin**  
Digital RGB / Analogue RGB Input
- 2. HDMI™ v. 1.3 (with Deep Colour)**  
Digital Video and Digital Audio Input
- 3. Mini D-sub 15-pin**  
Analogue RGB Input 2 / Analogue RGB (Monitor) Output  
(Component input via adaptor cable)
- 4. RCA x 1**  
Composite Video Input

#### AUDIO INPUT AND OUTPUT

- 5. 3.5mm mini-jack**  
Stereo Audio Input 1
- 6. 3.5mm mini-jack**  
Stereo Audio Input 2
- 7. 3.5mm mini-jack**  
Stereo Audio Input 3
- 8. 3.5mm mini-jack**  
Stereo Audio Output (Variable level)

#### PROJECTOR CONTROL

- 9. Mini D-Sub 9-pin**  
Control Port (RS-232C)
- 10. RJ-45**  
Network Connection

### ACCESSORIES

#### IN-BOX ACCESSORIES

- Remote Control (with batteries)
- DVI-I Computer Connection Cable
- Component Video Cable
- Soft case
- AC Mains Power Cable
- USB Cable
- Lens Cap

#### OPTIONAL ACCESSORIES

- DVI cable: LV-CA29
- Replacement Lamp: RS-LP04
- Ceiling Mounting Bracket: RS-CL07
- Ceiling Pipe 400-600mm: RS-CL08
- Ceiling Pipe 600-1000mm: RS-CL09



## Superior Brightness. Perfect Detail.

The XEED SX7 is ideal for boardrooms, large venues and AV installations. Delivering an ultra-bright 4000 lumens projection at SXGA+ resolution, the XEED SX7 incorporates Canon's unique AISYS optical system for high brightness.

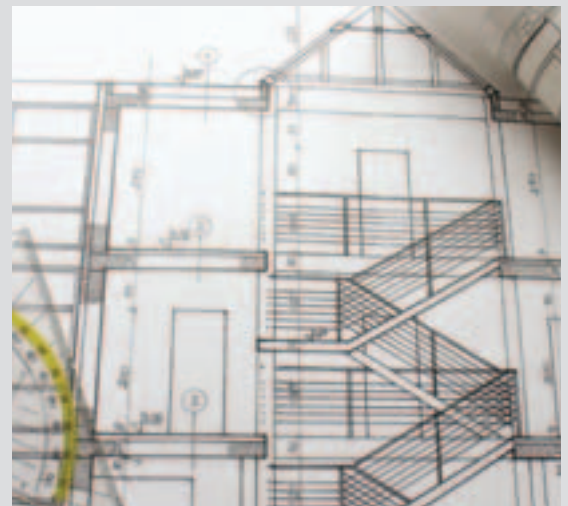


### Target Markets

**Business & Education:** Boardrooms; Lecture Theatres; Conference Centres

**Specialist Applications:** Photo Enthusiasts; Publishing, Printing & Pro Photo Applications; Museums; CAD & CAE; Simulation

- Native SXGA+ resolution and LCOS technology for seamless, lattice-free images
- Quiet operation: runs at just 31dBA in Quiet Mode, to minimise audience distraction
- Advanced AISYS Optical System delivers an ultra-bright 4000 lumens and 1000:1 contrast, for clear projection and vivid colours
- Compact, lightweight design – weighs just 4.8kg
- Fully automatic setup: Auto Focus, Auto Keystone Correction, Auto Screen Colour Correction and Auto Input Selection
- Canon powered wide-angle 1.7x zoom lens for flexible projector placement
- HD Ready, with HDCP-enabled DVI port
- Support for Adobe RGB and sRGB colour spaces, with new bright sRGB mode



### CONNECTIVITY

#### VIDEO INPUT AND OUTPUT

- 1. DVI-I 29-pin**  
Digital RGB / Digital Video / Analogue RGB Input 1
- 2. Mini D-sub 15-pin**  
Analogue RGB Input 2 (Component/SCART via adaptor cable)
- 3. Mini D-sub 15-pin**  
Analogue RGB (Monitor) Output
- 4. Mini DIN 4-pin**  
S-Video Input
- 5. RCA x 1**  
Composite Video Input

#### AUDIO INPUT AND OUTPUT

- 6,7,8. 3.5mm mini-jack x3**  
Stereo Audio Input 1 / Input 2 / Input 3
- 9. 3.5mm mini-jack**  
Stereo Audio Output (Variable level)

#### PROJECTOR CONTROL

- 10. USB Type 'B'**  
USB Mouse Control
- 11. Mini-DIN 8-pin**  
Service Port

### ACCESSORIES

#### IN BOX ACCESSORIES

- Remote Control (with batteries)
- Soft Case
- DVI-I Computer Connection Cable
- Component Video Cable
- AC Mains Power Cable
- USB Cable
- Lens Cap

#### OPTIONAL ACCESSORIES

- Replacement Lamp: RS-LP04
- Ceiling Mounting Bracket: RS-CL07
- Ceiling Pipe 400-600mm: RS-CL08
- Ceiling Pipe 600-1000mm: RS-CL09
- SCART cable: LV-CA31
- RS-232C control cable: RS-CA01
- Network Adaptor: RS-NA01

## Superior Projection for Enhanced Presentations.

Packed with powerful technology, the XEED SX6 is the ideal projector for maximum impact, high quality presentations. LCOS technology combines with SXGA+ resolution and Canon's unique AISYS optical system to provide detailed, seamless projection. The XEED SX6 offers advanced colour reproduction for graphics specialists.



### Target Markets

**Business & Education:** Large Meeting Rooms; Lecture Theatres

**Specialist Applications:** Publishing, Printing & Pro Photo Applications; CAD & CAE; Medical



- Native SXGA+ resolution and LCOS technology for seamless, lattice-free images
- Canon's Advanced AISYS Optical System delivers a bright 3500 lumens and 1000:1 contrast ratio, for clear projection and vivid colours
- Fully automatic setup: Auto Focus, Auto Keystone Correction, Auto Screen Colour Correction and Auto Input Selection
- Canon powered wide-angle 1.7x zoom lens for flexible projector placement
- HD Ready, with HDCP-enabled DVI port
- Support for Adobe RGB and sRGB colour spaces
- Quiet operation: runs at just 31 dBA in Quiet Mode, to minimise audience distraction



### CONNECTIVITY

#### VIDEO INPUT AND OUTPUT

- 1. DVI-I 29-pin**  
Digital RGB / Digital Video / Analogue RGB Input 1
- 2. Mini D-sub 15-pin**  
Analogue RGB Input 2 (Component/SCART via adaptor cable)
- 3. Mini D-sub 15-pin**  
Analogue RGB (Monitor) Output
- 4. Mini DIN 4-pin**  
S-Video Input
- 5. RCA x 1**  
Composite Video Input

#### AUDIO INPUT AND OUTPUT

- 6. 3.5mm mini-jack**  
Stereo Audio Input

#### PROJECTOR CONTROL

- 7. USB Type 'B'**  
USB Mouse Control
- 8. Mini-DIN 8-pin**  
Service Port

### ACCESSORIES

#### IN BOX ACCESSORIES

- Remote Control (with batteries)
- Soft Case
- DVI-I Computer Connection Cable
- Component Video Cable
- AC Mains Power Cable
- USB Cable
- Lens Cap

#### OPTIONAL ACCESSORIES

- Replacement Lamp: RS-LP02
- Ceiling Mounting Bracket: RS-CL07
- Ceiling Pipe 400-600mm: RS-CL08
- Ceiling Pipe 600-1000mm: RS-CL09
- SCART cable: LV-CA31
- RS-232C control cable: RS-CA34
- Network Adaptor: RS-NA01





## Unrivalled Clarity. Complete Connectivity.

With native SXGA+ resolution and a 1.5x zoom lens, the XEED SX80 offers superb image quality and connectivity. DVI and HDMI™ terminals provide direct digital connections to High Definition sources, while PC-free operation allows image display straight from USB flash drives or PictBridge-enabled digital cameras.

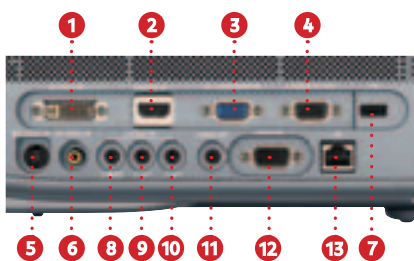


### Target Markets

**Business & Education:** Conference Centres; Boardrooms; Mobile Professionals; Lecture Rooms

**Specialist Applications:** Design Applications, Medical; Simulation; Photo Enthusiasts

- Native SXGA+ resolution and Canon LCOS panel technology for outstanding image quality
- Third Generation AISYS Optical System delivers 3000 lumens and 900:1 contrast ratio, for powerful images with vivid colours
- New Canon 1.5x powered zoom lens with 10:0 lens offset for easy installation
- Fully automatic setup: Auto Focus, Keystone Correction, Screen Colour Correction and Input Selection
- PC-Free Presentation from USB flash drive or digital camera
- HD Ready, with DVI and HDMI™ terminals
- Integrated RJ-45 Port for control and monitoring via a network
- Quiet operation: runs at just 31dBA in Quiet Mode, to minimise audience distraction
- Compact, stylish design



### CONNECTIVITY

#### VIDEO INPUT AND OUTPUT

- 1. DVI-I 29-pin**  
Digital RGB / Digital Video / Analogue RGB Input
- 2. HDMI™ v. 1.3 (with Deep Colour)**  
Digital Video and Digital Audio Input
- 3. Mini D-sub 15-pin**  
Analogue RGB Input 2  
(Component input via optional adaptor cable)
- 4. Mini D-sub 15-pin**  
Analogue RGB (monitor) output
- 5. Min-DIN 4 Pin**  
S video input
- 6. RCA x 1**  
Composite Video Input
- 7. USB Type A**  
USB Connection, PictBridge input

#### AUDIO INPUT AND OUTPUT

- 8. 3.5mm mini-jack**  
Stereo Audio Input 1
- 9. 3.5mm mini-jack**  
Stereo Audio Input 2
- 10. 3.5mm mini-jack**  
Stereo Audio Input 3
- 11. 3.5mm mini-jack**  
Stereo Audio Output (Variable level)

#### PROJECTOR CONTROL

- 12. Mini D-Sub 9-pin**  
Control Port (RS-232C)
- 13. RJ-45**  
Network connection

### ACCESSORIES

#### IN BOX ACCESSORIES

- Remote Control (with batteries)
- Soft Case
- DVI-I Computer Connection Cable
- Component Video Cable
- AC Mains Power Cable
- USB Cable
- Lens Cap

#### OPTIONAL ACCESSORIES

- DVI cable: LV-CA29
- Replacement Lamp: RS-LP05
- Ceiling Mounting Bracket: RS-CL10
- Ceiling Pipe 400-600mm: RS-CL08
- Ceiling Pipe 600-1000mm: RS-CL09

## Maximum Impact, Minimum Noise.

The XEED SX60 delivers bright, high contrast projection for crystal clear presentations and video playback. Operating at just 27dBA in Quiet mode, it offers near silent projection. A dedicated Home Cinema mode delivers superb moving image quality to business users and film enthusiasts alike.



### Target Markets

**Business & Education:** Conference centres; Boardrooms; Lecture Rooms

**Specialist Applications:** CAD & CAE; Medical; Simulation; Home Cinema



- Native SXGA+ resolution and LCOS technology for seamless, lattice-free images
- Canon's AISYS optical system delivers a bright 2500 lumens, for clear projection even in daylight conditions
- High 1000:1 contrast ratio for vivid images (2000:1 in Home Cinema Mode)
- Canon powered wide angle 1.7x zoom lens for flexible projector placement
- Fully automatic setup: Auto Focus, Auto Keystone Correction, Auto Screen Colour Correction and Auto Input Selection
- HD Ready, with HDCP-enabled DVI-port for pin-sharp images from digital sources, including encrypted content
- Quiet operation: runs at just 27dBA in Quiet Mode, to minimise audience distraction



### CONNECTIVITY

#### VIDEO INPUT AND OUTPUT

- 1. DVI-I 29-pin**  
Digital RGB / Digital Video / Analogue RGB Input 1
- 2. Mini D-sub 15-pin**  
Analogue RGB Input 2 (Component/SCART via adaptor cable)
- 3. Mini D-sub 15-pin**  
Analogue RGB (Monitor) Output
- 4. Mini DIN 4-pin**  
S-Video Input
- 5. RCA x 1**  
Composite Video Input

#### AUDIO INPUT AND OUTPUT

- 6. 3.5mm mini-jack**  
Stereo Audio Input

#### PROJECTOR CONTROL

- 7. USB Type 'B'**  
USB Mouse Control
- 8. Mini-DIN 8-pin**  
Service Port

### ACCESSORIES

#### IN BOX ACCESSORIES

- Remote Control (with batteries)
- Soft Case
- DVI-I Computer Connection Cable
- Component Video Cable
- AC Mains Power Cable
- USB Cable
- Lens Cap

#### OPTIONAL ACCESSORIES

- Replacement Lamp: RS-LP03
- Ceiling Mounting Bracket: RS-CL07
- Ceiling Pipe 400-600mm: RS-CL08
- Ceiling Pipe 600-1000mm: RS-CL09
- SCART cable: LV-CA31
- RS-232C control cable: RS-CA01
- Network Adaptor: RS-NA01



## Startling Brightness. Seamless Clarity.

When brightness and image quality are essential, the XEED X700 provides 4000 lumens at XGA resolution. Smooth LCOS imaging, enhanced by Canon's unique AISYS technology, make the XEED X700 ideal for medium to large spaces, including spaces with high levels of ambient light.



### Target Markets

**Business & Education:** School Halls; Lecture Theatres; Large Meeting Rooms

**Specialist Applications:** Exhibition Halls; Auditoriums; Large Venues; Public Signage; Sports and Media bars

- Native XGA resolution and LCOS technology for seamless images
- Canon Advanced AISYS Optical System delivers an ultra-bright 4000 lumens for clear projection, even in daylight and large venues
- 1000:1 contrast ratio for vivid colours and deeper blacks
- Fully automatic setup: Auto Focus, Auto Keystone Correction, Auto Screen Colour Correction and Auto Input Selection
- Canon powered wide-angle 1.7x zoom lens for flexible projector placement
- Double frame-rate drive
- Just 31 dBA operation in Quiet Mode
- HDCP-enabled DVI port for pin-sharp images from digital sources



### CONNECTIVITY

#### VIDEO INPUT AND OUTPUT

- 1. DVI-I 29-pin**  
Digital RGB / Digital Video / Analogue RGB Input 1
- 2. Mini D-sub 15-pin**  
Analogue RGB Input 2 (Component/SCART via adaptor cable)
- 3. Mini D-sub 15-pin**  
Analogue RGB (Monitor) Output
- 4. Mini DIN 4-pin**  
S-Video Input
- 5. RCA x 1**  
Composite Video Input

#### AUDIO INPUT AND OUTPUT

- 6,7,8. 3.5mm mini-jack x3**  
Stereo Audio Input 1 / Input 2 / Input 3
- 9. 3.5mm mini-jack**  
Stereo Audio Output (Variable level)

#### PROJECTOR CONTROL

- 10. USB Type 'B'**  
USB Mouse Control
- 11. Mini-DIN 8-pin**  
Service Port

### ACCESSORIES

#### IN BOX ACCESSORIES

- Remote Control (with batteries)
- Soft Case
- DVI-I Computer Connection Cable
- Component Video Cable
- AC Mains Power Cable
- USB Cable
- Lens Cap

#### OPTIONAL ACCESSORIES

- Replacement Lamp: RS-LP04
- Ceiling Mounting Bracket: RS-CL07
- Ceiling Pipe 400-600mm: RS-CL08
- Ceiling Pipe 600-1000mm: RS-CL09
- SCART cable: LV-CA31
- RS-232C control cable: RS-CA01
- Network Adaptor: RS-NA01

Specifications	XEED WUX10	XEED SX7	XEED SX6	XEED SX80	XEED SX60	XEED X700	
Product Class	Ultra-Portable						
LCD PANEL							
Type	LCOS Reflective Display, TFT Active Matrix						
Size and Number	0.7" diagonal (15.4mm x 9.6mm), 3 panels	0.7" diagonal (15mm x 11mm), 3 panels		0.55" diagonal (11.2mm x 8.4mm), 3 panels	0.7" diagonal (15mm x 11mm), 3 panels		
Aspect Ratio	16:10		4:3				
Native Resolution	1920 x 1200 (WUXGA), 2,304,000 pixels	1400 x 1050 (SXGA+), 1,470,000 pixels				1024 x 768 (XGA), 786,432 pixels	
OPTICS							
Lamp Type	275W NSH (AC)		270W NSH	230W NSH (AC)	180W NSH	275W NSH (AC)	
Lens F Number and Focal Length	F1.85 - F2.65; f=21.8 - 31.9mm		F1.85 - F2.5; f=21.7 - 35.8mm		F1.95 - F2.6; f=16.6 - 24.8mm		
Zoom Magnification and Control	1.5x Motorised		1.7x Motorised		1.5x Motorised		
Focus Control	Motorised Auto Focus						
Lens Shift	10:0, fixed		9:1, fixed		10:0, fixed		
9:1, fixed							
IMAGE AND AUDIO							
Brightness	3200 lumens	4000 lumens	3500 lumens	3000 lumens	2500 lumens	4000 lumens	
Brightness Uniformity	88%						
Contrast Ratio	1000:1 (full on / full off)			900:1 (full on / full off)	1000:1 (full on / full off), 2000:1 (full on / full off) in Home Cinema Mode		
1000:1 (full on / full off)							
Projection Distance Coverage	1.2m - 9.1m (3.0 - 4.4m for 100" image)	1.2m - 9.0m (3.0m - 4.9m for 100" image)		1.2m - 9.1m (3.0 - 4.4m for 100" image)	1.2m - 9.0m (3.0m - 4.9m for 100" image)		
Screen Size	40" - 300" (81 x 61cm - 610 x 457cm)						
Digital Zoom Magnification	1x - 12x						
Keystone Correction Range	Vertical: +/- 20° (Auto / Manual), Horizontal: None	Vertical: +/- 20° (Auto / Manual), Horizontal: +/- 20° (Manual)		Vertical: +/- 20° (Auto / Manual), Horizontal: None	Vertical: +/- 20° (Auto / Manual), Horizontal: +/- 20° (Manual)		
Digital RGB Compatibility	WUXGA / UXGA / WSXGA+ / SXGA+ / WSXGA / SXGA / WXGA / XGA / SVGA / VGA		SXGA+ / SXGA / WXGA / XGA / SVGA / VGA			XGA / SVGA / VGA	
Analogue RGB Compatibility	WUXGA / UXGA / WSXGA+ / SXGA+ / WSXGA / SXGA / WXGA / XGA / SVGA / VGA		UXGA / SXGA+ / SXGA / WXGA / XGA / SVGA / VGA			UXGA / SXGA+ / SXGA / WXGA / XGA / SVGA / VGA	
Component Video Scan Systems	1080p / 1080i / 1035i / 720p / 576p / 480p / 576i / 480i		1080i / 1035i / 720p / 575p / 575i / 480p / 480i				
Video / S-Video Colour Systems	PAL / PAL-M / PAL-N / NTSC / NTSC4.43 / SECAM						
Scanning Frequency	Horizontal: 15-75kHz, Vertical: 50-85Hz, Clock: 170 MHz	Horizontal: 15-100kHz, Vertical: 50-100Hz, Clock: 170MHz		Horizontal: 15-75kHz, Vertical: 50-85Hz, Clock: 170MHz	Horizontal: 15-100kHz, Vertical: 50-100Hz, Clock: 170MHz		
Image Modes	Standard, Presentation, Movie, sRGB	Standard, Presentation, Movie & Photo, Adobe RGB, sRGB	Standard, Presentation, Movie & Photo, Adobe RGB, sRGB	Standard, Presentation, Movie, sRGB	Standard, Presentation, Movie, Home Cinema, sRGB	Standard, Presentation, Movie, sRGB	
Image Enhancement	12-bit Digital Gamma Correction, 6-axis Colour Adjust						
Built-in Audio	1.0W RMS, Monaural						
CONNECTORS							
Digital RGB / Analogue RGB Input 1	DVI-I 29-pin (HDCP compatible)						
Digital Video / Digital Audio Input	HDMI Version 1.3 (with Deep Colour)	-	-	HDMI Version 1.3 (with Deep Colour)	-	-	
Analogue RGB Input 2	Mini D-Sub 15-pin						
Analogue RGB Output	Shared with Analogue RGB Input 2	Mini D-Sub 15-pin				Mini D-Sub 15-pin	
Component Video Input	Via 3x RCA adaptor cable (supplied)						
S-Video Input	-	Mini-DIN 4-pin				Mini-DIN 4-pin	
Composite Video Input	RCA x 1						
Audio Input 1	3.5mm stereo mini-jack						
Audio Input 2	3.5mm stereo mini-jack	-	-	3.5mm stereo mini-jack	-	3.5mm stereo mini-jack	
Audio Input 3	3.5mm stereo mini-jack	-	-	3.5mm stereo mini-jack	-	3.5mm stereo mini-jack	
Audio Output	3.5mm stereo mini-jack (variable level)		-	3.5mm stereo mini-jack (variable level)		3.5mm stereo mini-jack (variable level)	
Mouse Control	-	USB Type B		USB Type A (PictBridge enabled)		USB Type B	
Service Port / Projector Control	Mini D-Sub 9-pin	Mini-DIN 8-pin		Mini D-Sub 9-pin	Mini-DIN 8-pin		
MECHANISMS							
Front Elevation Mechanism	One-touch mechanical foot						
Maximum Elevation Angle	10°						
RATINGS							
Dimensions (W x H x D)	284 x 114 x 336mm	266 x 114 x 336mm		332 x 121 x 340mm	266 x 114 x 336mm		
Weight	4.9kg	4.8kg	4.7kg	5.2kg	4.6kg	4.8kg	
Rated Supply Voltage	100V - 240V AC, 50/60Hz						
Power Consumption	Normal Mode: 390W / Quiet Mode: 320W / Standby: 15W	Normal Mode: 360W / Quiet Mode: 290W / Standby: 7W	Normal Mode: 355W / Quiet Mode: 290W / Standby: 7W	Normal Mode: 330W / Quiet Mode: 270W / Standby: 15W	Normal Mode: 250W / Quiet Mode: 225W / Standby: 7W	Normal Mode: 360W / Quiet Mode: 290W / Standby: 7W	
Noise Level	Normal Mode: 35dBA / Quiet Mode: 31dBA				Normal Mode: 30dBA / Quiet Mode: 27dBA		
Operating Environment	+5°C to +35°C						
Storage Environment	-30°C to +60°C						
Warranty	3 years						

Some images are simulated for clarity of reproduction. All data is based on Canon's standard testing methods.

Specifications are subject to change without notice. ™ and ©: All company and/or product names are trademarks and/or registered trademarks of their respective manufacturers in their markets and/or countries.

To learn more about the XEED multimedia projector range and their respective throw distances, visit [www.canon-europe.com/xeed](http://www.canon-europe.com/xeed)

you can  
**Canon**

Canon Inc.  
[www.canon.com](http://www.canon.com)

Canon Europa N.V.  
[www.canon-europe.com](http://www.canon-europe.com)

English Edition 0124W124  
© Canon Europa N.V., 2007 (0807)



©1986 Panda symbol WWF  
© WWF Registered Trademark