

EPSON®
EXCEED YOUR VISION

Epson
Home Cinema **Projectors**



Epson
Home Cinema **Projectors**



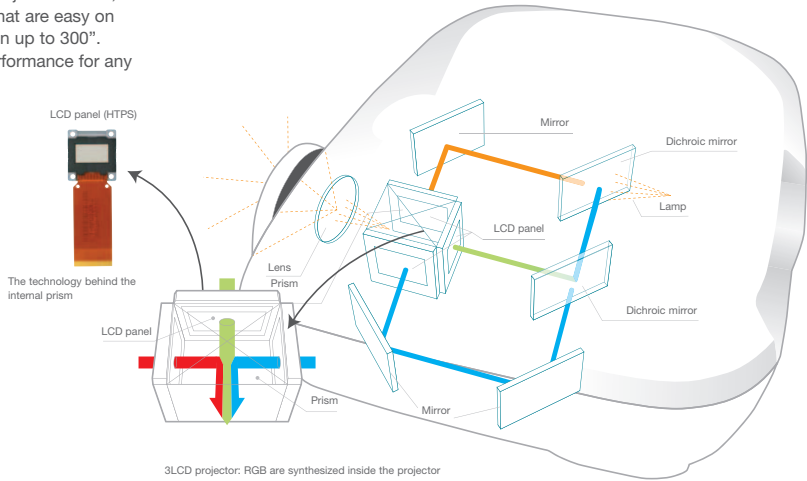
The High-Definition future of big screen home entertainment

Experience no-compromise big screen home entertainment with Epson's high-end projectors. Combine leading technologies with easy set-up and operation to create the ultimate in home viewing. From movies and photos to video games, Epson puts you at the heart of the action.



Project bright, clear colour and deep blacks in any light conditions
Enjoy more accurate colour reproduction with exclusive Epson 3LCD technology. Project beautiful, flicker-free images that are easy on the eyes, on a screen up to 300".
Ensure a perfect performance for any

subject with bright whites, vivid colours and the deepest blacks.
Pictures are so clear and bright you can watch with the lights on or off.

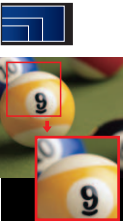


Introducing a new, High-Definition standard in home cinema
Create a new world of bright, colourful High-Definition entertainment with the latest Epson C²Fine technology. Enjoy no-

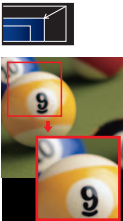
compromise performance with contrast ratio up to 50,000:1 and true 1080p resolution. Project jet blacks, warmer colours and the smoothest images even on fast-moving video thanks to enhanced light control.



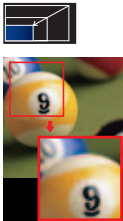
Full HD in 1080p



720p

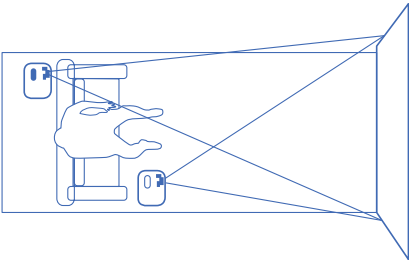


480p



Making superb screen entertainment simple

Set up and get started quickly and easily. Position your projector on a table, shelf or even on the ceiling. Adjust the projected image with the optical zoom and the horizontal/vertical lens shift and project perfect images even at an angle. Choose the best location and move the image, not the projector!



Connect to your other home entertainment systems

Create a truly integrated HD home entertainment system with extensive connectivity. Project images from your TV, set-top box, digital stills or video camera, PC or games console. With HDMI connectivity your big screen entertainment is future-proof.

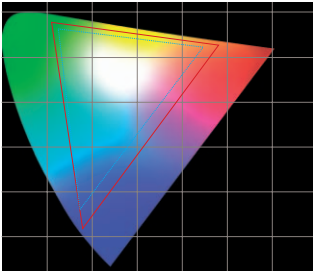


Connectivity of TW1000

Get the best performance, whatever you watch, and in any light

Optimise projector settings to match your subject and the light conditions with up to 7 pre-configured Colour Modes. Bring out the best in everything from photos to video games. And maximise quality on movies with the exclusive Epson Cinema Filter.

— EMP TW1000
..... sRGB



New lens for sharper images, total flexibility and complete control

Project accurate, defined images with reduced colour flare through the new Fujinon lens with 14 sub-lenses with 2 aspherical lenses. Enhance flexibility with the improved 2.1x optical zoom and take manual control of settings with the advanced on-screen display.



HD colour, automatically or with professional adjustment

Rely on vivid colours and smooth shades with full 10-bit colour processing and a high contrast ratio. Boost whites with Epson Super White technology. Or customise images to suit your taste with 6 colour axis adjustment and 9 point gamma tuning.



Without Super White



With Super White



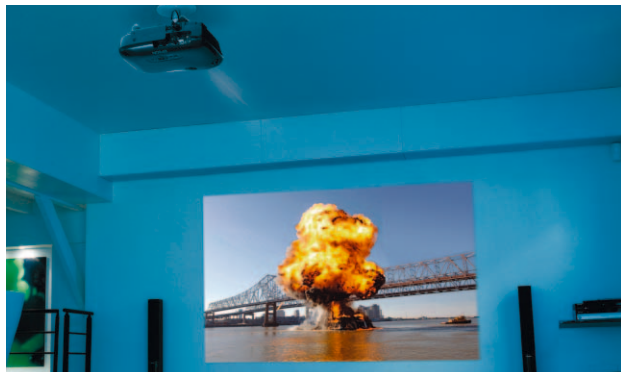
Epson EMP **TW2000**

Lead the HD revolution with the Epson EMP-TW2000. Project superb, lifelike colours and deep blacks with Epson C²Fine panels and exclusive DeepBlack technology. Set new standards with 10-bit video, a 50,000:1 contrast ratio and 1600 lumens brightness.

Next generation image and colour calibration

Calibrate projected images to match with the Image Science Foundation (ISF) video standards. Ensure your

projector produces the purest images possible when it is used during the day and night. And safeguard settings by storing them in code-protected memory modes.



© Buena Vista Home Entertainment, Inc



Watch the explosive action of *Deja Vu* on Blu-Ray and DVD.

Product sold separately.

Connect to a whole new world of home entertainment

Integrate your Epson EMP-TW2000 quickly and easily into your home set-up with a new interface. Use HDMI connectors for unbeatable High-Definition images. Interfaces include 2 x HDMI, and also YUV, RGB, S-Video and Composite.

Take your home entertainment into the High-Definition future

- Next generation, full HD 1080p resolution projector
- Superb images with Epson C²Fine panels and exclusive Epson Cinema Filter and DeepBlack technologies
- Versatile, easy set up with lens shift and advanced picture adjustment
- Warm, natural colours and tones with 10-bit processing and HDMI v1.3 (2 inputs)
- 1080p/24fps compatibility through the HDMI and YUV interfaces. 3-2 / 2-2 pulldown selectable in the menu
- New x.v.Color mode for higher and more accurate/vivid colour reproduction (HDMI)

Powerful 1600 lumens brightness to enjoy High-Definition content even in daylight



Prepare to experience true High-Definition magic

See the difference with full 1080p resolution and a 50,000:1 contrast ratio. Create deep blacks and enhanced whites with Epson Auto Iris. Project smooth shades and colours with full 10-bit processing and HDMI v 1.3. And optimise settings with 7 pre-set Colour Modes.

Advanced picture adjustments including ISF calibration menu



New Fujinon lens with 14 sub-lenses, 2.1x zoom and wide horizontal/vertical lens shift





Epson EMP TW1000

Project spectacular images in full HD 1080p resolution. This projector is easy to set up and operate, and delivers a superb performance every time.

Optimum quality in any light with Epson Cinema Filter technology

Future-proof, versatile connectivity includes HDMI v1.3 input



- Set new standards with full HD 1080p resolution, HDMI v1.3 input and 1080p/24fps compatibility (HDMI, 3-2 pulldown)
- Discover next-generation quality with Epson's C²Fine technology
- Clear, bright images with 12,000:1 contrast ratio and full 10-bit video processing
- Flexible positioning with wide horizontal/vertical lens shift and 2.1x zoom lens



Easy set up and placement with wide lens shift and long throw lens



Added sharpness from a new Fujinon lens with advanced sharpness correction

C²FINE

HD
ready

HDMI

Full HD
1080p

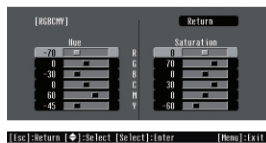


Epson EMP TW700

Discover the HD difference and transform your home entertainment. Bring a new level of brightness, colour and clarity to your own big screen.



- Take a step up to HD-ready big screen home cinema
- Project superb still or video images with Epson 3LCD technologies
- Smooth, rich colour with 720p, 1600 lumens and 10,000:1 contrast ratio
- Easy to set up and position, with horizontal and vertical lens shift



Make professional adjustments with the advanced features accessible in the On Screen Menu



Boost whites automatically with Epson Super White technology

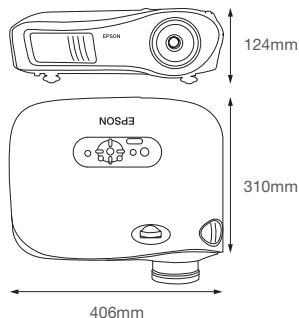


Epson EMP-TW2000

Epson EMP-TW1000

Epson EMP-TW700

Technology	3LCD, C-Fine	3LCD, C-Fine	3LCD
Resolution	1080p (1920 x 1080)	1080p (1920 x 1080)	720p (1280 x 720)
Image aspect	16/9	16/9	16/9
High Definition	Full HD	Full HD	HD Ready
Brightness	1600 ANSI lumens	1200 ANSI lumens	1600 ANSI lumens
Screen size	30° to 300° (0.87 m to 9.03 m) (Wide) 30° to 300° (1.88 m to 19.15 m) (Tele)	30° to 300° (0.87 m to 9.03 m) (Wide) 30° to 300° (1.88 m to 19.15 m) (Tele)	30° to 300° (0.93 m to 9.61 m) (Wide), 30° to 300° (2.00 m to 20.35 m) (Tele)
Dynamic contrast ratio	50,000:1	12,000:1	10,000:1
Projection lens			
Type	Manual zoom & focus	Manual zoom & focus	Manual zoom & focus
F-number	2.0 - 3.17	2.0 - 3.17	2.0 - 3.17
Focal length	22.5 mm - 47.2 mm	22.5 mm - 47.2 mm	22.5 mm - 47.2 mm
Zoom ratio	1 - 2.1	1 - 2.1	1 - 2.1
Lens shift vertical & horizontal	V ± 96% / H ± 47%	V ± 96% / H ± 47%	V ± 102% / H ± 50%
Video processing	Full 10 bit	Full 10 bit	134% of sRGB
Colour space	134% of sRGB and x.v.Colour	134% of sRGB	134% of sRGB
Noise (Economy mode)	24dB	26 dB	26 dB
Lamp type	170W UHE (E-TORL)	170W UHE (E-TORL)	170W UHE (E-TORL)
Lamp hours			
Normal / Economy mode	2500 / 3000 hours	1700 / 3000 hours	1700 / 3000 hours
Supported signals			
Video	NTSC / NTSC 4:43 / PAL / M-PAL / N-PAL / PAL60 / N-PAL / PAL60 / SECAM 525i / 525p / 625i / 625p / 750p / 1125i / 1125p 24 fps / 1080p in HDMI	NTSC / NTSC 4:43 / PAL / M-PAL / N-PAL / PAL60 / SECAM 525i / 525p / 625i / 625p / 750p / 1125i / 1125p 24 fps / 1080p in HDMI	NTSC / NTSC 4:43 / PAL / M-PAL / N-PAL / PAL60 / SECAM 525i / 525p / 625i / 625p / 750p / 1125i
Computer	SVGA / XGA / SVGA / VGA	SVGA / XGA / SVGA / VGA	SVGA / XGA / SVGA / VGA
Inputs			
Video	1 x Composite 1 x S-Video 3 x RCA (YUV)	1 x Composite 1 x S-Video 3 x RCA (YUV) 1 x SCART (on D4 with adaptor)	1 x Composite 1 x S-Video 3 x RCA (YUV) 1 x SCART (on D4 with adaptor)
HDMI	2 x HDMI version 1.3	1 x HDMI version 1.3	1 x HDMI version 1.2
Computer	1 x RGB	1 x RGB	1 x RGB
Control	1 x RS 232 1 x Trigger out for motorised screen	1 x RS 232 1 x Trigger out for motorised screen	1 x RS 232 1 x Trigger out for motorised screen
Image adjustments			
Keystone correction	-	-	± 15 degrees
Chema Filter	Controlled automatically	Controlled automatically	Controlled automatically
Colour modes	Vivid, Cinema day, Natural, Cinema night, HD, Silver screen x.v.Colour	Dynamic, Living room, Natural, Theatre, Theatre Black 1, Theatre Black 2	Dynamic, Living room, sRGB, Natural, Theatre, Theatre Black 1, Theatre Black 2
Power consumption	100 - 240 VAC	100 - 240 VAC	100 - 240 VAC
Weight	5.6 kg	5.6 kg	5.4 kg
Dimensions			
D x W x H	310 x 406 x 124 mm	310 x 406 x 124 mm	310 x 406 x 124 mm
Warranty			
Projector	3 years next day on-site (UK) 3 years or 1700 hours	3 years next day on-site (UK) 3 years or 1700 hours	3 years next day on-site (UK) 3 years or 1700 hours
Lamp			
Advanced features	ISF certification, x.v.Colour, 3D Y/C separation, advanced sharpness adjustments, Super white, Six axis colour adjustment, gamma adjustment, direct power on, test pattern, dedicated memories for ISF calibration	3D Y/C separation, advanced sharpness adjustments, Super white, Six axis colour adjustment, gamma adjustment, direct power on, test pattern	3D Y/C separation, advanced sharpness adjustments, Super white, Six axis colour adjustment, gamma adjustment, direct power on, test pattern
Accessories included	Power Cable Lens cover Backlit remote control with battery User's manual set	Power Cable Lens cover Backlit remote control with battery D4 / SCART adaptor User's manual set	Power Cable Lens cover Backlit remote control with battery D4 / SCART adaptor User's manual set



Connectivity – TW1000 and TW700



Backlit remote control

Screen size		EMP-TW2000/EMP-TW1000				EMP-TW700			
Screen diagonal 16/9 aspect	Screen dimension W x H	Wide	Tele	Vertical offset angle		Wide	Tele	Vertical offset angle	
60"	1.3 m x 0.7 m	1.8 m	3.8 m	35 cm		1.9 m	4.0 m	39 cm	
80"	1.8 m x 1.0 m	2.4 m	5.1 m	46 cm		2.5 m	5.4 m	52 cm	
100"	2.2 m x 1.2 m	3.0 m	6.4 m	58 cm		3.2 m	6.8 m	65 cm	
120"	2.7 m x 1.5 m	3.6 m	7.6 m	69 cm		3.8 m	8.1 m	78 cm	
150"	3.3 m x 1.9 m	4.5 m	9.6 m	86 cm		4.8 m	10.2 m	98 cm	
200"	4.4 m x 2.6 m	6.0 m	12.8 m	115 cm		6.4 m	13.6 m	130 cm	



Telephone: 08702 416900 (UK)
1 800 409132 (Republic of Ireland)
E-mail: info@epson.co.uk

www.epson.co.uk
www.epson.ie
Fax: +44 (0) 8702 413093

Pixelworks DNP™ ICs
are used in this projector

EPSON® is a registered trademark of Seiko EPSON® Corporation. All other product names and other company names used herein are for identification purposes only and may be trademarks or registered trademarks of their respective owners. Errors and omissions excepted, all specifications are subject to change without notice.

EPSON®