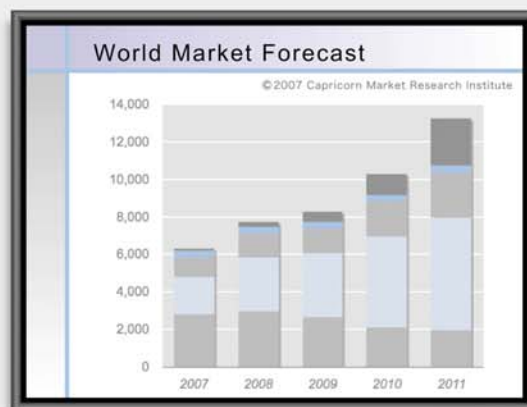


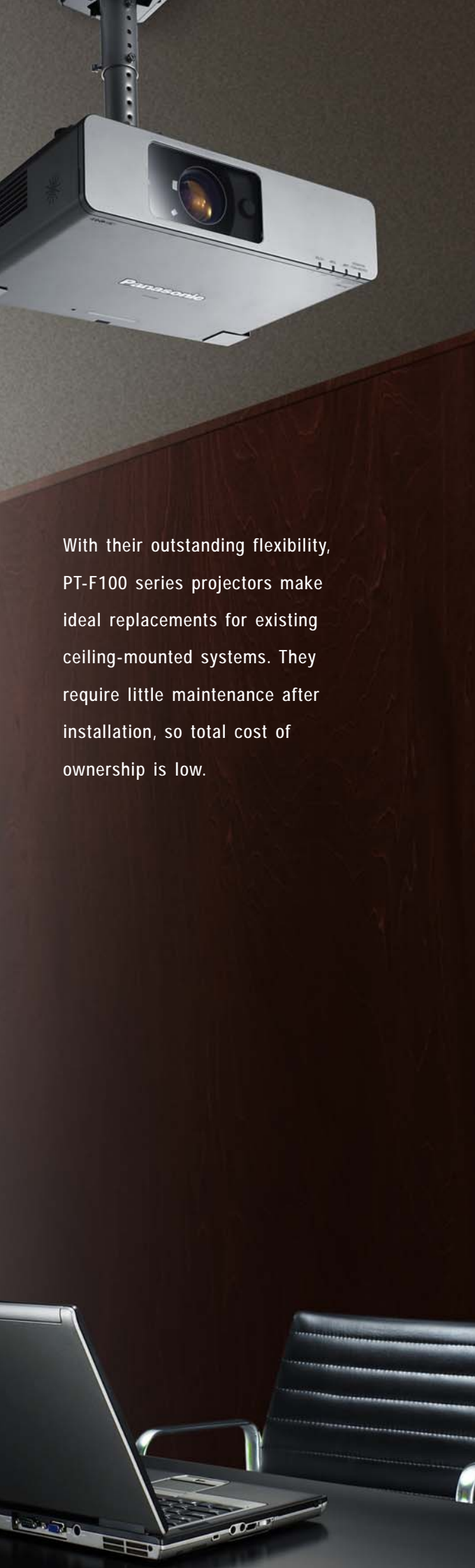
Panasonic
ideas for life

PT-F100NTEA
PT-F100EA
LCD Projectors
TOUGHARTIST



**Long-Lasting
Brightness**





A Bright Choice for New Installations and Replacement Use

With their outstanding flexibility, PT-F100 series projectors make ideal replacements for existing ceiling-mounted systems. They require little maintenance after installation, so total cost of ownership is low.

Advanced Technologies that Maintain High Brightness Over a Longer Service Life

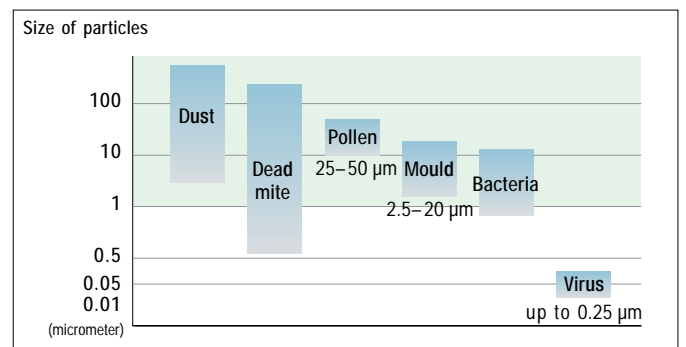
Auto Rolling Filter (ARF) and Anti-Dust Design

A Micro Cut Filter, a high-efficiency electrostatic filter, with superior dust-collecting performance combines with Panasonic's original Auto Rolling Filter and anti-dust design to minimise brightness loss due to dust accumulation. The Auto Rolling Filter periodically winds the used section into the casing so that a fresh section of filter is exposed. Thus, peak performance is maintained. In developing the anti-dust design, Panasonic totally re-engineered the airflow path, from intake to exhaust, to create a cabinet that hermetically seals off the projector interior. This design and the Auto Rolling Filter team up to keep the air inside the projector dust-free at all times.



Micro Cut Filter

A high-efficiency electrostatic filter in the air intake section traps dust particles that are 1 microns* or larger. By capturing approximately 7 times as much dust as our previous filters, it guards against optical blocks and reduces the penetration of dust into the interior to provide stable operation by preventing drops in brightness.



The PT-F100NTEA and PT-F100EA are high-performance LCD projectors designed for use in fixed installations. Each model combines Panasonic's original Auto Rolling Filter with a new lamp drive system to deliver crisp, bright images over extended periods of time. Each also offers outstanding installation flexibility, with 2x zoom lens, lens shift and wireless/wired LAN* functions that accommodate everything from permanent ceiling-mounted use to simple placement on a shelf. Whether you're looking to install a new system or considering a replacement, Panasonic answers the call for projectors that provide long-lasting brightness, simple maintenance, and easy, casual use even in fixed installations.

* The PT-F100NTEA only.



The projector can also be set on a shelf at the back of the room, greatly simplifying installation.

Thanks to the wireless LAN function, you can set up a system using multiple PCs quickly and easily.

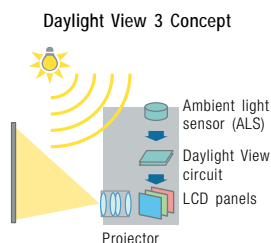


New Drive System for Optimal Lamp Performance

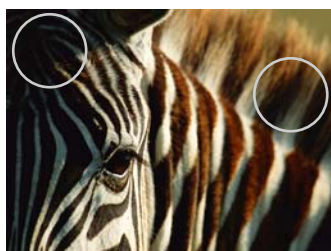
Lamps used in a projector require much higher precision than ordinary household lamps. Panasonic employs a number of new technologies—including a new drive system—that help maintain optimal lamp performance for longer-lasting brightness.

Daylight View 3 Technology: Enhanced Perception of Brightness and Contrast*

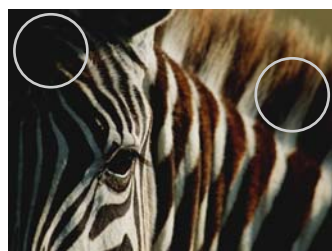
The PT-F100 series feature Panasonic's Daylight View 3 technology, which uses an adaptive low-pass filter to optimise the dark parts of the image. This makes images seem brighter and higher in contrast, so they appear crisp, vivid and easy to see even in brightly lit rooms. Daylight View 3 also includes a built-in ambient light sensor that automatically detects room brightness and adjusts operation accordingly.



* There is no actual change in the rated brightness or contrast ratio.



Simulated image with Daylight View 3 turned on. The brightness and contrast over the entire image appear to be enhanced, and details in shadow areas are reproduced clearly.

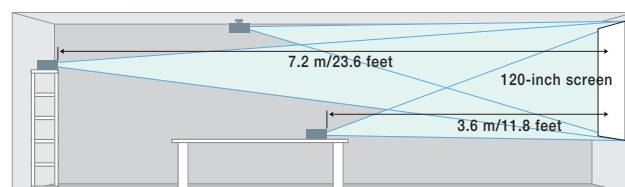


Simulated image with Daylight View 3 turned off. Overall contrast appears lower, and images in dark areas are blackened.

Convenient features for fixed installation

Wide 2x Zoom and Horizontal/Vertical Lens Shift Give You More Installation Flexibility

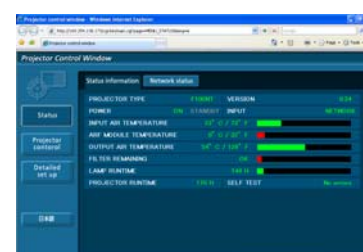
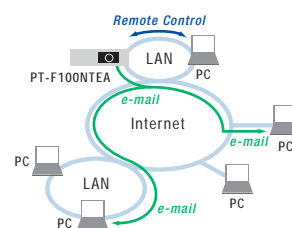
Each can project a 120-inch image from any distance between 3.6 m (11.8 feet) and 7.2 m (23.6 feet). In new installations, this lets you accommodate a wide range of room sizes and



shapes. And when replacing existing projectors, the new 2x zoom greatly expands your installation flexibility.

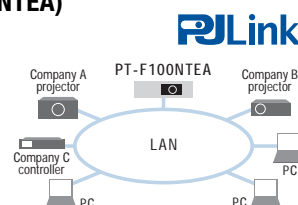
Wired LAN: Web Browser Control/Monitoring, E-Mail Message Alert (PT-F100NTEA)

Anybody can operate the PT-F100NTEA by remote control or monitor its status over a LAN network, because it is all done using the computer's familiar web browser. Furthermore, the projector sends an e-mail message to notify the operator when an error has occurred, or a lamp needs to be replaced.



PJLink™ compatibility (PT-F100NTEA)

The LAN terminals support PJLink™ class 1 connection. Control with the same specifications is also possible when used in a multi-projector system with projectors of another brand.



Direct Power Off

Because the cooling fan keeps operating until the lamp is cooled, you can turn off the room's main power without waiting for the projector to cool down.

Easy Lamp Replacement from the Rear

For easier maintenance, you can replace the lamp from the rear. The lamp is easily replaced even after the projector is installed on the ceiling.

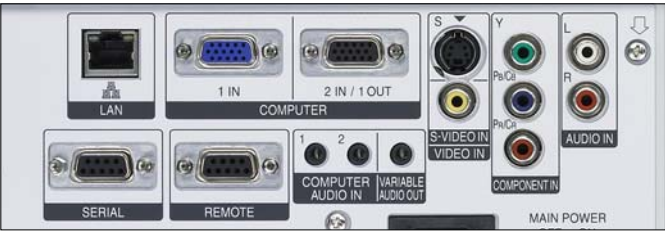




The front panel covers the lens to keep it clean from dust, and conceals the controls to prevent accidental misoperation. It can be opened for easy access to controls even after the projector is installed on the ceiling.

Abundant connection terminals

Designed for versatility, each projector comes equipped with a host of connection terminals. The RS232C specifications are the same as in previous Panasonic models, so replacement is quick and easy.



The PT-F100NTEA features a LAN connector terminal.

Easy-to-Use Remote Control with Laser Pointer

The supplied remote control features a number of wireless projection controls, including Microsoft® PowerPoint® page up/down capability. The control range and distance have been extended, and the buttons are now larger and easier to use.



Equipped with two transmitters for an extended remote control range.



Wireless Functions Add Versatility (PT-F100NTEA)

Easy Wireless Projection from Multiple PCs

With the PT-F100NTEA's wireless capability, you don't need cables to connect a PC. That means it's easy to bring in a lap-



Wireless Manager Control Panel (Launcher)
To begin wireless projection, simply use the control panel (launcher) displayed in the PC window.

top (with a wireless LAN function) and deliver a smooth, hassle-free presentation. You can make the settings for wireless connection quickly and easily using Wireless Manager ME 4.0 software. When the presentation is finished, Wireless Manager restores the PC to its previous LAN settings, so the PC is ready to reconnect to your LAN. Functions include Live mode and Multi-Live mode. In Live mode, the image projected is identical to the image seen on the PC screen. In Multi-Live mode, you can wirelessly connect with multiple PCs.

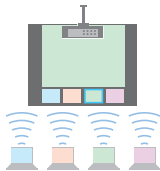


Virtual Remote Control
The same graphics used on the projector's remote control can be displayed on the PC screen. This makes it easy to operate the projector right from the PC, without having to use the remote control.

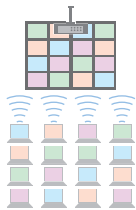
Four-window style



Index style (Four thumbnails)



Extended index style (16 thumbnails)



A Wide Variety of Wireless Functions

The PT-F100NTEA provides a host of convenient wireless functions, including Wireless Prompter (Secondary Display Transmission), selective area transmission and a 16-window index style that lets you project images from up to 16 PCs at the same time. Wireless transmission is possible from one PC to a maximum of eight projectors at a time.

Other Valuable Features

- Anti-theft features: Security anchor, user password, control panel lock and text superimposing
- HDTV compatibility
- Full compatibility with sRGB colour space for accurate colour reproduction (in natural mode)
- Picture mode selection (standard/dynamic/natural)
- Blackboard mode allows you to project images onto an ordinary classroom or conference room blackboard
- Shutter function for image/sound muting
- Selectable 17-language onscreen menu



Security anchor

Specifications

Power supply	100–240 V AC, 50/60 Hz
Power consumption	330 W (Approx. 3.5 W in standby mode with fan stopped)
LCD panel	
Panel size	0.7" (17.78 mm) diagonal (4:3 aspect ratio)
Display method	Transparent LCD panel (x 3, R/G/B)
Drive method	Active matrix
Pixels	786,432 (1,024 x 768) x 3, total of 2,359,296 pixels
Pixel configuration	Stripe
Lens	Manual zoom (1:1–1:2), manual focus, F 1.7–2.6, f 21.6–43.0 mm
Lamp	250 W UHM™ lamp
Projection size	33–300 inches/838–7,620 mm diagonally (16:10 aspect ratio)
colours	Full colour (16,777,216 colours)
Brightness	3,200 lumens
Centre-to-corner uniformity	80%
Contrast ratio	400:1 (full on/full off)
Resolution (RGB)*1	1,024 x 768 pixels
Scanning frequency	
RGB	Horizontal: 15–91 kHz, Vertical: 50–85 Hz
YPbPr	480i (525i): fh 15.75 kHz; fv 60 Hz 576i (625i): fh 15.63 kHz; fv 50 Hz 480p (525p): fh 31.50 kHz; fv 60 Hz 576p (625p): fh 31.25 kHz; fv 50 Hz 720/60p (750/60p): fh 45.00 kHz; fv 60 Hz 720/50p (750/50p): fh 37.50 kHz; fv 50 Hz 1080/60i(1125/60i): fh 33.75 kHz; fv 60 Hz 1080/50i(1125/50i): fh 28.13 kHz; fv 50 Hz
S-Video/Video	NTSC, NTSC4.43, PAL-M, PAL60: fh 15.75 kHz; fv 60 Hz PAL, SECAM, PAL-N: fh 15.63 kHz; fv 50 Hz
Optical axis shift**2	Vertical: ±50%, horizontal: ±32%
Keystone correction range	Vertical: ±30°
On-screen menu	17 languages: English, French, German, Spanish, Italian, Korean, Russian, Chinese, Japanese, Swedish, Norwegian, Danish, Portuguese, Polish, Hungarian, Czech, and Thai

Installation	Front/rear ceiling/desk (menu selection) 4 cm (round), x 1, 3.0 W (monaural) output power
Built-in speakers	
Terminals	
COMPUTER 1 IN	D-sub HD 15-pin x 1
COMPUTER 2 IN/COMPUTER 1 OUT	D-sub HD 15-pin x 1 (input/output selectable using on-screen menu)
COMPONENT IN	RCA pin x 3
VIDEO IN	RCA pin x 1
S-VIDEO IN	Mini DIN 4-pin x 1
AUDIO IN (COMPUTER 1)	M3 (stereo) x 1
AUDIO IN (COMPUTER 2)	M3 (stereo) x 1
AUDIO IN (COMPONENT/VIDEO/S-VIDEO)	RCA pin (L, R) x 1 M3 (stereo) x 1 (variable)
AUDIO OUT	D-sub 9-pin x 1 (RS-232C)
SERIAL	D-sub 9-pin x 1
REMOTE	RJ-45 x 1, 10BASE-T/100BASE-TX/1000BASE-T
LAN	2 m (6'7") Moulded plastic (PC+ABS)
Power cord length	432 x 124.5 x 319 mm (17" x 4-29/32" x 12-9/16") 6.2 kg (13.7 lbs.)
Cabinet material	
Dimensions (W x H x D)	
Weight	
Operating environment	
Temperature	0°–40°C (32°–104°F)
Humidity	20%–80% (no condensation)
Wireless LAN (PT-F100NTEA)	
Standard	IEEE802.11b/g
Operation range*3	Approx. 30 m (98'5")
Wireless Remote Control Unit	
Power supply	3 V DC (AA battery x 2)
Operation range*3	Approx. 15 m (49'3") when operated from directly in front of the signal receptor
Dimensions (W x H x D)	48 x 163 x 24.5 mm (1-7/8" x 6-13/32" x 31/32")
Weight	117 g (4.1 oz) (including batteries)

*1: Input signals that exceed this resolution will be converted to 1,024 x 768 pixels. *2: Shift range is limited during simultaneous horizontal and vertical shifting. *3: Operation range differs depending on the environment.

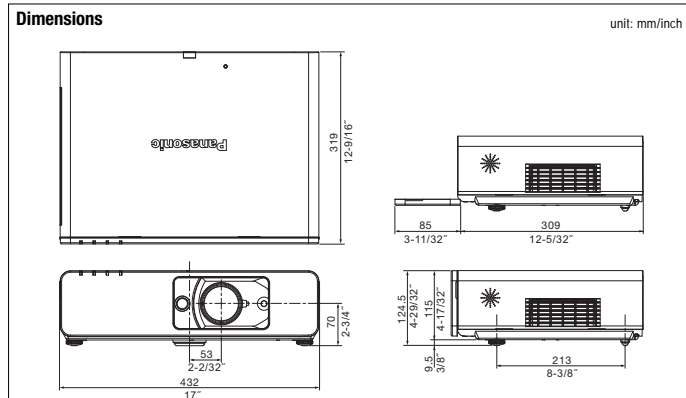
Supplied Accessories

- Power cord
- Wireless remote control
- Batteries for remote control
- Safety wire rope
- Wireless Manager ME 4.0 (CD-ROM)*

* For the PT-F100NTEA only

Optional Accessories

- ET-LAF100 Replacement lamp unit
- ET-RFF100 Replacement filter unit
- ET-PKF100H Ceiling mount bracket for high ceilings
- ET-PKF100S Ceiling mount bracket for low ceilings



NOTES ON USE

- The projector uses a high-voltage mercury lamp that contains high internal pressure. This lamp may break, emitting a large sound, or fail to illuminate, due to impact or extended use. The length of time that it takes for the lamp to break or fail to illuminate varies greatly depending on individual lamp characteristics and usage conditions.
- The brightness of the lamp will gradually decrease with use.
- The projector includes consumable parts. The frequency of replacement for the lamp and other consumable parts will increase if the projector is subjected to extended, continuous use. For details, please consult a service representative.

Projection Distance (4:3)

Project size (diagonal)	Projection distance (L)		Height from the edge of screen to centre of lens (H)
	Min (wide)	Max (telephoto)	
0.84 m / 33"	– / –	1.9 m / 6.4'	0 – 0.25 m / 0 – 0.8'
1.02 m / 40"	1.2 m / 3.8'	2.4 m / 7.8'	0 – 0.30 m / 0 – 1.0'
1.52 m / 60"	1.8 m / 5.8'	3.6 m / 11.7'	0 – 0.46 m / 0 – 1.5'
2.03 m / 80"	2.4 m / 7.8'	4.8 m / 15.7'	0 – 0.61 m / 0 – 2.0'
2.54 m / 100"	3.0 m / 9.8'	6.0 m / 19.7'	0 – 0.76 m / 0 – 2.5'
3.05 m / 120"	3.6 m / 11.8'	7.2 m / 23.7'	0 – 0.91 m / 0 – 3.0'
3.81 m / 150"	4.5 m / 14.8'	9.0 m / 29.6'	0 – 1.14 m / 0 – 3.7'
5.08 m / 200"	6.0 m / 19.8'	12.1 m / 39.6'	0 – 1.52 m / 0 – 5.0'
7.62 m / 300"	9.1 m / 29.8'	18.1 m / 59.5'	0 – 2.29 m / 0 – 7.5'

To use network functions, a PC is required that meets the conditions given below:

OS:	Microsoft® Windows® 2000 Professional, Windows® XP Professional, Windows® XP Home Edition, Windows® Vista™
Web browser:	Internet Explorer 6.0 or later, or Netscape Communicator 7.0 or later
CPU:	Intel® Pentium® III or higher, or other compatible processor (1 GHz or higher is recommended).
Memory:	256 MB or more
Free hard disk space:	60 MB or more
CD-ROM drive:	CD-ROM drive or DVD drive
Wireless LAN:	IEEE 802.11b/g compatible (built-in wireless LAN system or external IEEE 802.11b/g LAN card must be installed and running normally).
Wired LAN connector:	RJ-45

NOTE: Some IEEE 802.11g/b wireless LAN may not allow connection to the projector.

NOTE: Use Category 5e (or higher) cables for 1000BASE-T connection.

Visit the Projectors Global Web Site shown below for the latest information.

Panasonic

Projectors Global Web Site

<http://panasonic.co.jp/pavc/global/projector>

Weights and dimensions shown are approximate. Specifications are subject to change without notice. Product availability differs depending on region and country. This product may be subject to export control regulations. UHM is a trademark of Matsushita Electric Industrial Co., Ltd. Intel and Pentium are registered trademarks of Intel Corporation. Windows is either a registered trademark or trademark of Microsoft Corporation in the United States and/or other countries. All other trademarks are the property of their respective trademark owners. Projection images simulated.



PT-F100NTEA1-07MAR50K Printed in Japan.